

JUSTICE • EQUITY • HEALTH • SAFETY

Many kids must go over half a mile in high-crime neighborhoods across busy streets to find safe places to play. Schools in their neighborhoods, could open gyms, courts, and fields through shared use. Physical activity promotes scholastic performance, healthy weight, and self-esteem.

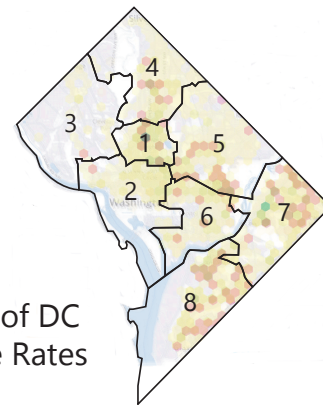
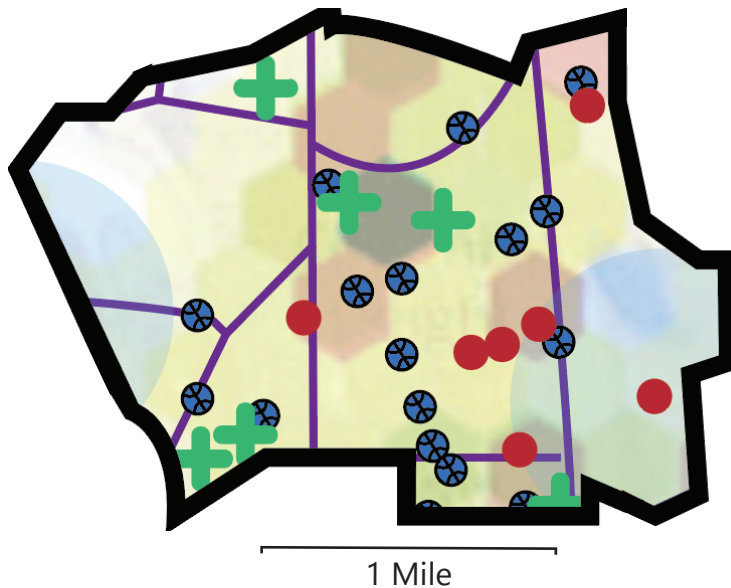
WARD 1

Physical Activity Desert

Physical Activity Desert (noun):

An urban area in which it is difficult to find a safe, affordable place to engage in physical activity.

Physical activity deserts are indicated by light blue circles.



KEY

- Major Roads
- Density of Murders*
- Density of Assaults*
- Density of Robberies*
- Schools without Shared Use
- Recreation Centers**
- Schools with Shared Use***



Active Kids,
Healthy Community
DCactivekids.org

*Shading on maps indicate increased crime and brown areas show multiple types of crime.

**DPR recreation centers, community centers, playgrounds, tennis courts, Boys and Girls Clubs, and YMCA's.

***Shared Use schools had agreements on file from 2013-2015 with Department of General Services.

Crime Data is from the Urban Institute 2014 Crime Map.